

3/8" - 1/2" I.D.

HV SAFETY HOSE SERIES



COXREELS® HV "High Visibility" Safety Hose Series powers up the safety of your reel. The HV Hose will add awareness and visibility to your hose creating the safest environment possible. To maximize your safety to the highest level, add EZ-Coil controlled retraction to your Coxreels. Featured on P, SH, and T Series on 3/8" or 1/2" hose.

HIGH VISIBILITY SAFETY HOSE SERIES

HOSE						DIMENSIONS							
MODEL	I.D.	O.D.	FT.	PSI	APRX. LBS.	W	H	L	X	Y	M	N	
P SERIES						Models with hose are for air water service with a maximum temperature 150°F. Models less hose can be used for air, water or oil.							
EZ-P-LP-325-HV	3/8"	5/8"	25	300	28	6 1/2"	14 7/8"	13 1/2"	5"	6"	3"	5"	
EZ-P-LP-350-HV	3/8"	5/8"	50	300	43	6 3/4"	18 5/8"	17 1/8"	6"	6"	4"	5"	
EZ-P-LP-450-HV	1/2"	3/4"	50	300	48	7"	18 5/8"	17 1/8"	6"	6"	4"	5"	
SH SERIES						Models with hose are for air water service with a maximum temperature 150°F. Models less hose can be used for air, water or oil.							
EZ-SH-350-HV	3/8"	5/8"	50	300	50	8 1/2"	21 1/4"	19 1/2"	6"	6"	4"	5"	
EZ-SH-375-HV	3/8"	5/8"	75	300	68	8 1/4"	25 1/2"	24"	6"	6"	4"	5"	
EZ-SH-3100-HV	3/8"	5/8"	100	300	71	8 1/4"	25 1/2"	24"	6"	6"	4"	5"	
EZ-SH-450-HV	1/2"	3/4"	50	300	54	8 1/4"	21 1/4"	19 1/2"	6"	6"	4"	5"	
EZ-SH-475-HV	1/2"	3/4"	75	300	68	8 3/4"	25 1/2"	24"	6"	6"	4"	5"	
EZ-SH-4100-HV	1/2"	3/4"	100	300	81	8 3/4"	25 1/2"	24"	6"	6"	4"	5"	
T SERIES						Models with hose are for air water service with a maximum temperature 150°F. Models less hose can be used for air, water or oil.							
EZ-TSH-350-HV	3/8"	5/8"	50	300	61	9 3/8"	21 1/4"	19 1/2"	8"	9"	7"	8"	
EZ-TSH-375-HV	3/8"	5/8"	75	300	82	9 3/8"	25 1/2"	24"	8"	9"	7"	8"	
EZ-TSH-3100-HV	3/8"	5/8"	100	300	85	9 3/8"	25 1/2"	24"	8"	9"	7"	8"	
EZ-TSH-450-HV	1/2"	3/4"	50	300	63	9 3/8"	21 1/4"	19 1/2"	8"	9"	7"	8"	
EZ-TSH-475-HV	1/2"	3/4"	75	300	82	9 3/8"	25 1/2"	24"	8"	9"	7"	8"	
EZ-TSH-4100-HV	1/2"	3/4"	100	300	95	9 3/8"	25 1/2"	24"	8"	9"	7"	8"	

HV SAFETY HOSE SERIES :: REEL SPECIFICATIONS

SWIVEL

- External fluid path with machined from solid brass 90° full-flow NPT swivel
- Swivel Seals: NITRILE

HOSE

- Hybrid (PVC + Rubber) bright yellow hose with a white glossy stripe.
- Superior visibility, increased hose flexibility, enhanced kink resistance and reduced coil memory.
- Temperature range: -40°F to 158°F (-40°C to 70°C)
- 300 PSI at 70°F

DESIGN & STRUCTURE

- Each of these reels is built of their standard series with their own unique features & benefits

EZ-COIL RETRACTION

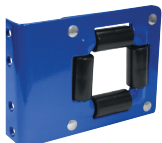
- OUR PATENTED SAFETY SYSTEM THAT RETRACTS UP TO 80% SLOWER THAN CONVENTIONAL SPRING DRIVEN REELS
- Enclosed factory tuned & matched cartridge-style spring motor
- Non-corrosive, stainless steel spring, pawl, & zinc plated ratchet
- Multi-position lock ratchet mechanism secures hose at desired length

SPRING DRIVEN

EZ-COIL®

TOP REQUESTED UPGRADES & ACCESSORIES

SEE PAGE 17 FOR ADDITIONAL ACCESSORIES



UPGRADE TO SOLID ROLLERS

Heavy duty machined from solid plastic rollers. Only for T Series models 3/8" and 1/2".



ADD AIR TOOL KIT

BEND RESTRICTOR: Designed to limit the degree of bending without compromising the integrity of the hose assembly while also preventing the hose-end from kinking, excessive wearing, and tearing. Available for low pressure models.

QUICK DISCONNECT: Quick disconnect couplings tread onto end of hose fitting to provide fast, leak-proof connections for low pressure hose lines.



UPGRADE TO STAINLESS STEEL SWIVEL

Based on the upgraded medium pressure swivel, the stainless steel swivel is machined from solid 316 stainless steel and features increased wall thicknesses with upgraded seals and backup rings.



ADD BEND RESTRICTOR

Designed to limit the degree of bending without compromising the integrity of the hose assembly while also preventing the hose-end from kinking, excessive wearing, and tearing. Available for low pressure models

! WARNING: Cancer and reproductive Harm – See page 19 for more information – www.P65Warning.ca.gov

